

# MERROW®

SEWING MACHINE COMPANY

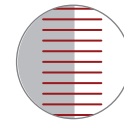
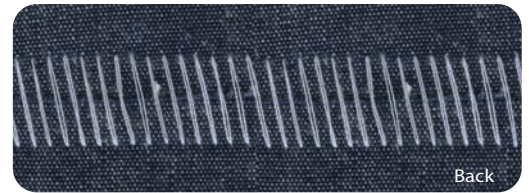
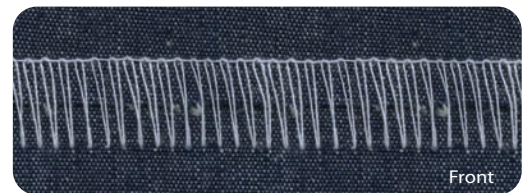
A SOLUTION FOR:

## CONTINUOUS PROCESSING

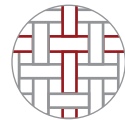


### MERROW 70-D3B-2 SPECIFICATIONS

OPERATING SPEED:	2250 rpm
STANDARD STITCH ECCENTRIC :	6 spi
STITCH ECCENTRIC RANGE :	4-12 spi
STANDARD NEEDLE :	8SDT
NEEDLE RANGE:	3SDT - 8SDT
STITCH TYPE	501
STITCH WIDTH :	5/8" (16mm)
NUMBER OF THREADS	1



BUTTED  
SEAM



WOVENS

## 70-D3B-2 | BUTTED SEAM MACHINE

The Industry Standard Sewing Machine for End-to-End Seaming of Piece Goods

- Table or Railway Mountable
- Single Thread Machine with Cutters
- Ideal for Seaming Dry Wovens
- Sews a Wide Variety of Materials
- 10 Year Warranty
- **Designed and Engineered in the U.S.A.**
- **Parts and Service Available in 65 Countries**
- For More Information Visit [www.merrow.com](http://www.merrow.com)

# MERROW

CLASS

MODEL

OPTION

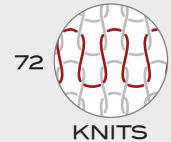
70 - D3B - 2

STYLE

# MERROW has the Widest Variety of Sewing Machines for End-to-End Seaming.



70

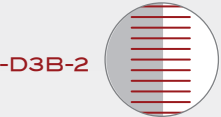


72

CLASS

STYLE

OPTION



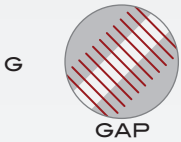
BUTTED SEAM

Machine produces a flat, one-thread butted seam (standard configuration).



STITCH MULTIPLIER

Machine is designed with a non-differential mechanism for increasing the stitch count, particularly at selvages.



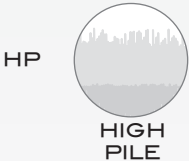
GAP

Machine creates a gap between the joined ends of the fabric.



ROLL

Machine creates a rolled seam at joined ends of fabric.



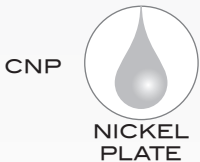
HIGH PILE

Machine is engineered for use on high pile fabric.



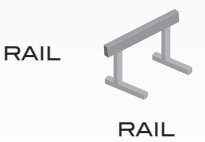
2-THREAD

Two-thread locked stitch machine.



NICKEL PLATE

Machine is chemically nickel plated for use in wet and harsh environments; extreme corrosion resistance.



RAIL

Machine is designed to be mounted on a railway sewing system.

	70	72
-D3B-2	■	■
-Y3B-2	■	■
G	■	■
R	■	■
HP	■	■
LS	■	■
CNP	■	■
RAIL	■	

**MERROW**<sup>®</sup>  
SEWING MACHINE COMPANY

502 BEDFORD STREET  
FALL RIVER, MA 02720 USA  
1001.800.431.6677  
WWW.MERROW.COM

■ Denotes Styles/Options that are INCLUDED on this Model  
■ Denotes Styles/Options that are AVAILABLE for each Machine Class